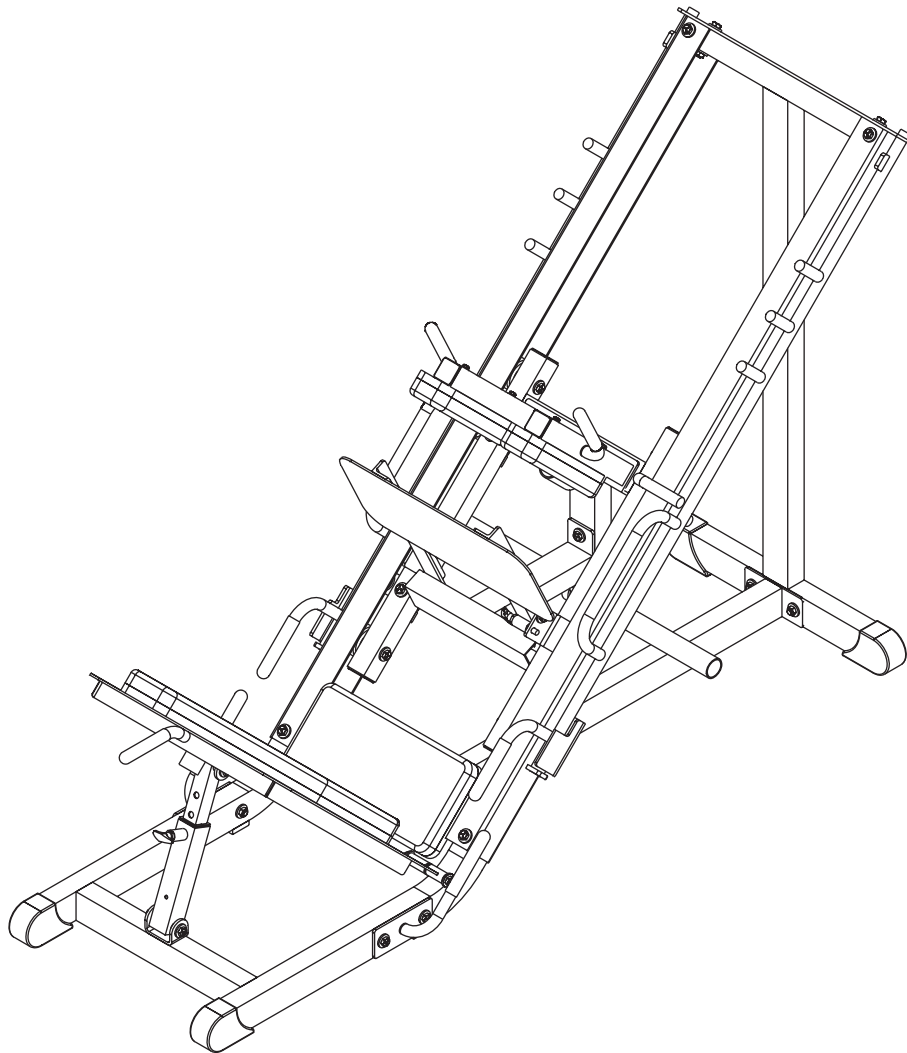


OWNERS MANUAL

HOIST

HF4357

LEG PRESS HACK COMBO



Note: Both Serial Number and Model Number are Required when Ordering Parts

RECORD SERIAL NUMBER HERE

CATALOG NUMBER

1205-000

Customer Service

(800) 548-5438

(619) 578-7676

Fax

(619) 578-9558

OWNERS
I N S T R U C T I O N S

CONTENTS

INSTRUCTIONS (Step 1) 2

FRAME ASSEMBLY (Step 2) 4

PRE-ASSEMBLY 17

PARTS LISTING 20

HARDWARE LISTING 21

BOLT SIZING CHART 22

WASHER SIZING CHART 23

DECAL PLACEMENTS 25

WEIGHT TRAINING TIPS 31

WEIGHT TRAINING EXERCISE LOG 32

GENERAL MAINTENANCE 34

MAINTENANCE SCHEDULE..... 36

LIMITED WARRANTY 37

OWNERS

I N S T R U C T I O N S

Step 1

I N S T R U C T I O N S

Before beginning assembly please take the time to read the instructions thoroughly. Please use the catalog in this manual to make sure that all parts have been included in your shipment. When ordering use the part number and description from the catalog. Use only Hoist replacement parts when servicing. Failure to do so will void your warranty and could result in personal injury.

Hoist equipment is designed to provide the smoothest, most effective exercise motion possible. After assembly, you should check all functions to ensure correct operation. If you experience problems, first recheck the assembly instructions to locate any possible errors made during assembly. If you are unable to correct the problem, call your authorized Hoist dealer. Be sure to have your serial number and this catalog when calling. When all parts have been accounted for, continue on to Step 2.

SUGGESTED TOOLS

Socket Wrench

1/2", 9/16" & 3/4" Sockets

Crescent Wrench

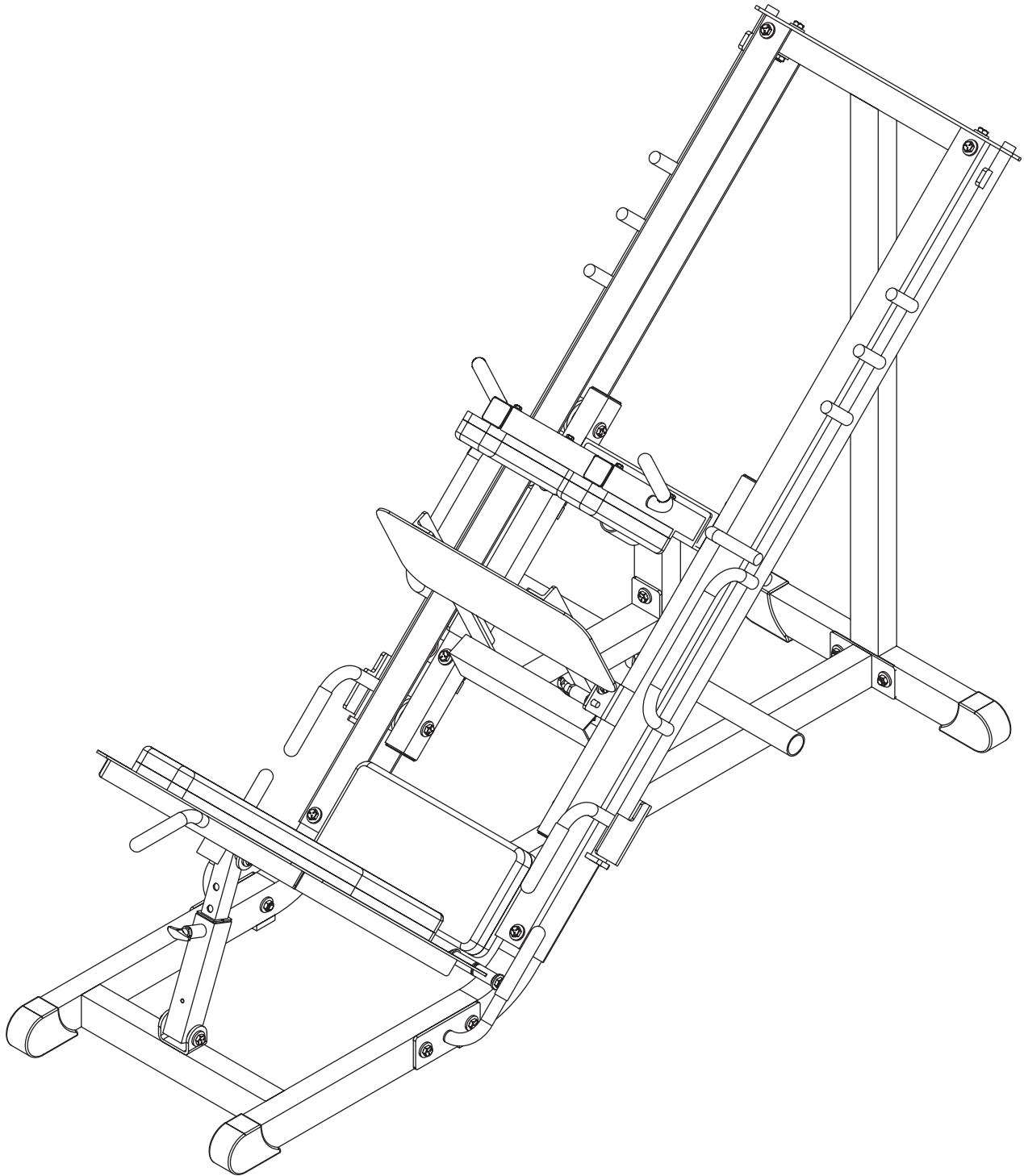
Rubber Mallet

Tape Measure

OWNERS
I N S T R U C T I O N S

OWNERS INSTRUCTIONS

Step 2 FRAME ASSEMBLY



OWNERS

INSTRUCTIONS

Step 2a

FRAME ASSEMBLY

Start this assembly by attaching (2) to (1). Then you will attach (4) and (5) to (1). *Just Snug these bolts at this point.* Finish by attaching (8) and (9) to (1). *Wrench Tighten these bolts.*

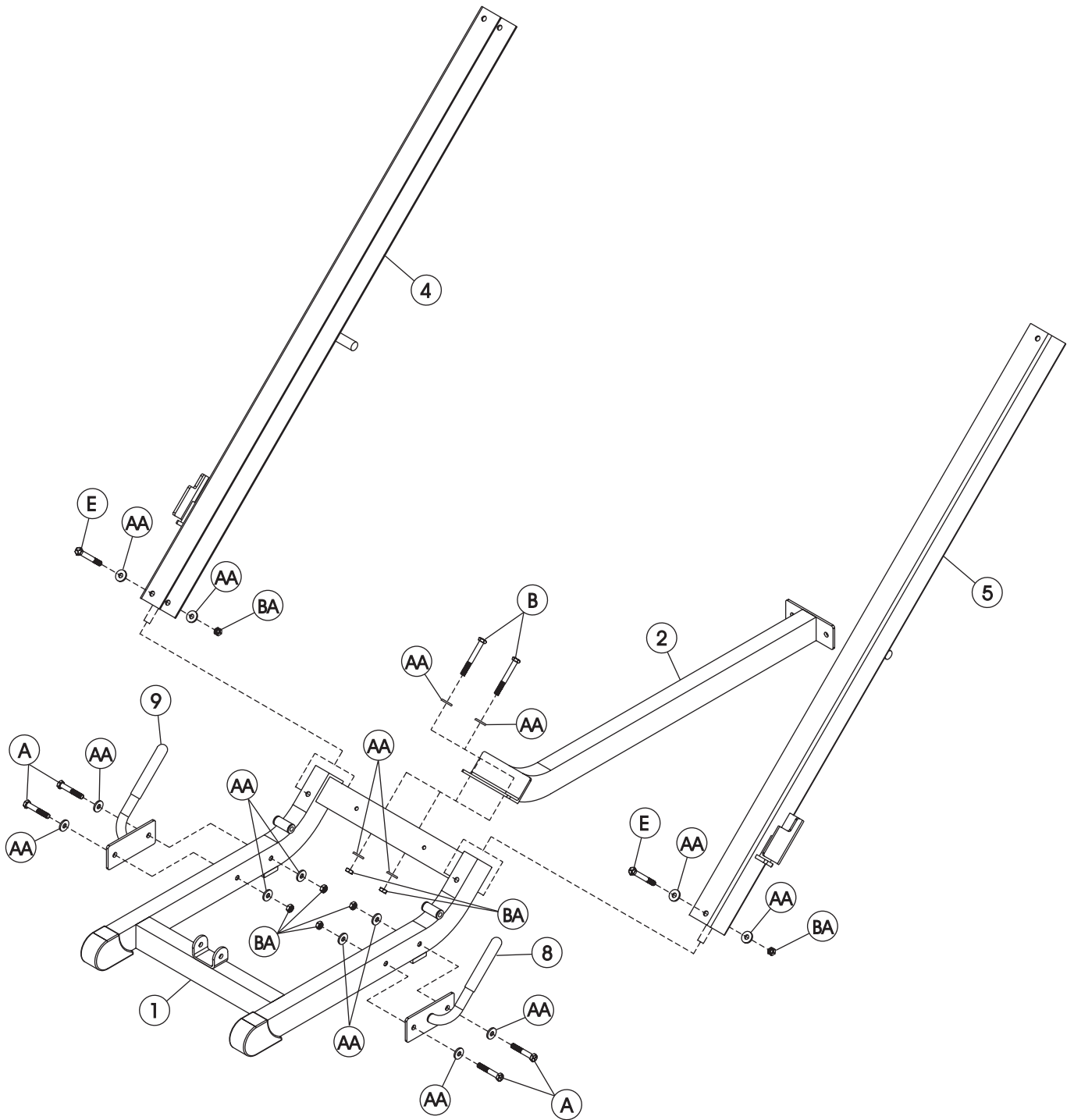
Part Descriptions

- 1 - Base Front
- 2 - Base Runner
- 4 - Left Rail
- 5 - Right Rail
- 8 - Right Handle
- 9 - Left Handle

Hardware Descriptions

- A - 1/2"-13 x 3" Hex Head Screw
- B - 1/2"-13 x 4" Hex Head Screw
- E - 1/2"-13 x 4 1/4" Hex Head Screw
- AA - 1/2" Flat Washer
- BA - 1/2" Nylok Nut

OWNERS INSTRUCTIONS



OWNERS

INSTRUCTIONS

Step 2b

FRAME ASSEMBLY

In this step you will attach (15) to (1). Now insert (18) into (10). Then attach (10) to (1) and (18) to (15). Wrench Tighten bolts. Then back off 1/2" turn or enough so these parts can adjust easily.

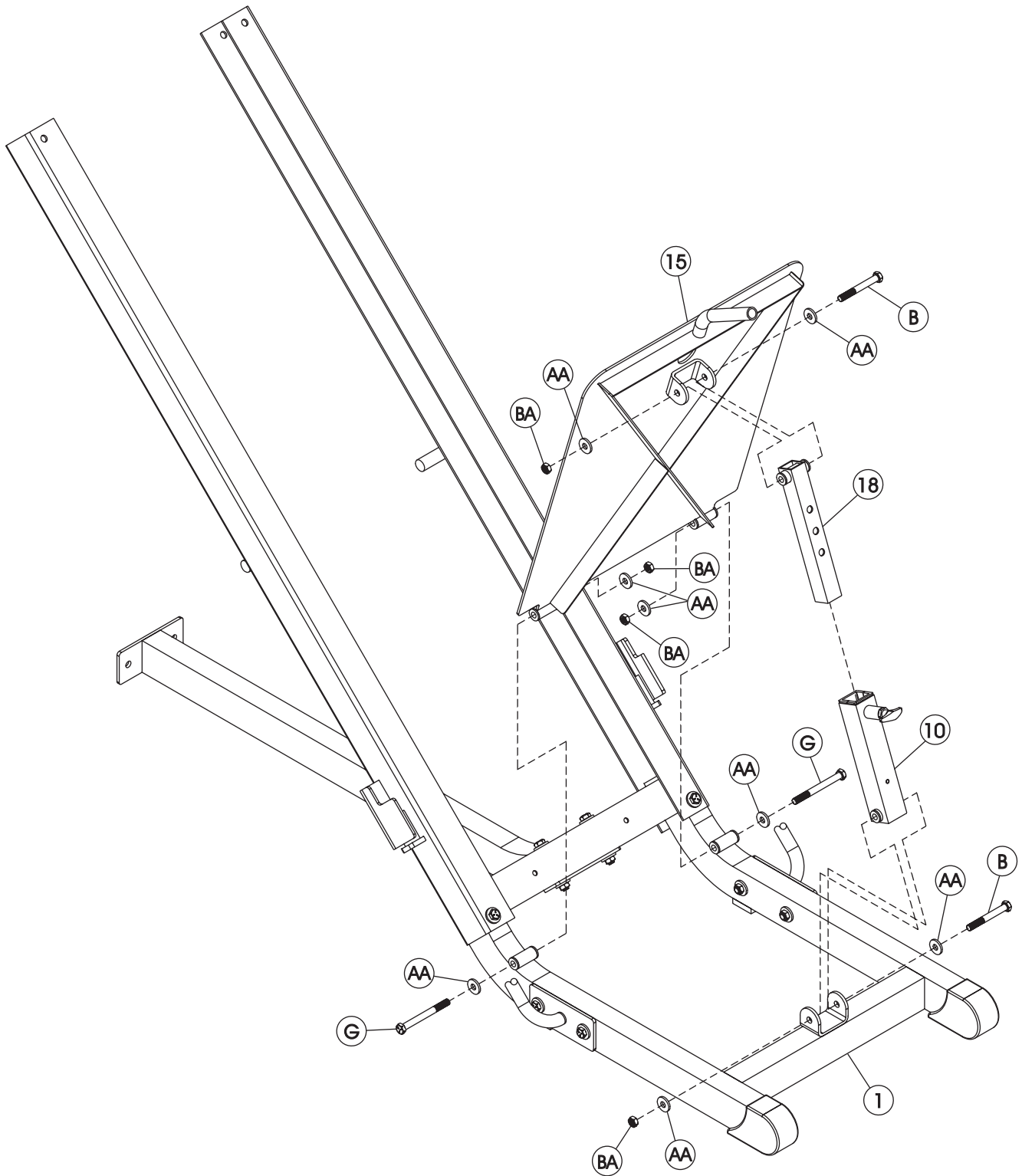
Part Descriptions

1 - Base Front
10 - Outer Footrest Adjuster
15 - Hack Footrest
18 - Inner Footrest Adjuster

Hardware Descriptions

B - 1/2"-13 x 4" Hex Head Screw
G - 1/2"-13 x 5 1/2" Hex Head Screw
AA - 1/2" Flat Washer
BA - 1/2" Nylok Nut

OWNERS INSTRUCTIONS



OWNERS

INSTRUCTIONS

Step 2c

FRAME ASSEMBLY

Start by attaching (14) and (7) to (6). Wrench Tighten bolts. Attach (16) to (6). Wrench Tighten bolts. Then back off 1/2" turn or enough so these parts can adjust easily. Attach (CK) to the both sides of (6). And a (CJ) in each bracket on the right side of (6). Wrench Tighten bolts. (See Detail -A-). Attach two (CJ)'s to the two (11)'s. Wrench Tighten bolts. (See Detail -B-). Then attach both (11)'s to the left side of (6). Note that there is a slotted hole in (11) at this connection point which allows for adjustment of these wheels. At this point, position the (11)'s all the way in. Just Snug bolts. They will be adjusted out in Step 2e.

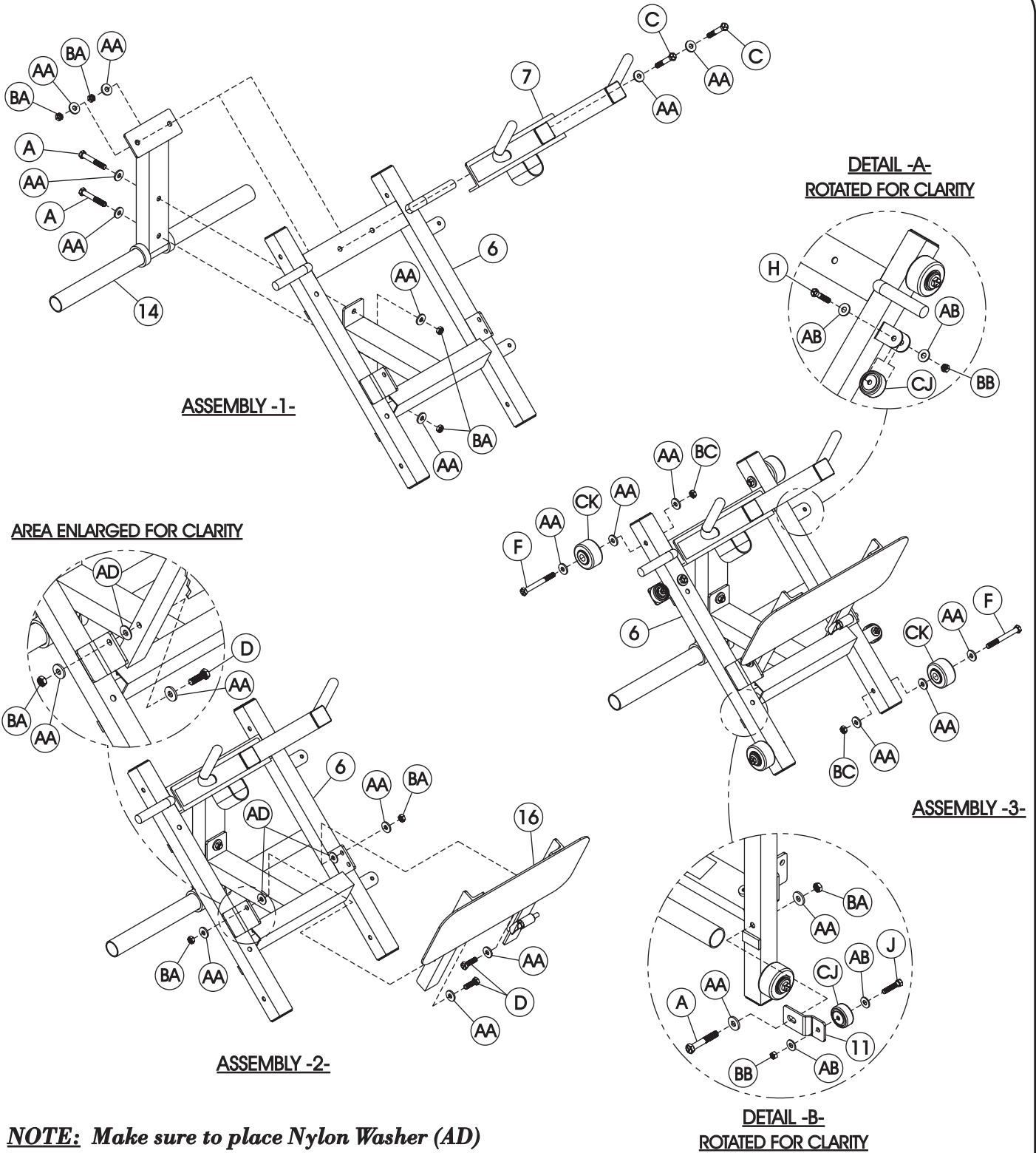
Part Descriptions

6 - Carriage
7 - Shoulder Pad Mount
11 - Wheel Mount
14 - Weight Carriage
16 - Leg Press Footrest

Hardware Descriptions

A - 1/2"-13 x 3" Hex Head Screw
C - 1/2"-13 x 3 1/4" Hex Head Screw
D - 1/2"-13 x 1 1/2" Hex Head Screw
F - 1/2"-13 x 4 1/2" Hex Head Screw
H - 3/8"-16 x 2" Hex Head Screw
AA - 1/2" Flat Washer
AB - 3/8" Flat Washer
AD - 1/2" Nylon Flat Washer
BA - 1/2" Nylok Nut
BB - 3/8" Nylok Nut
BC - 1/2" Nylok Nut (Thin)
CJ - 2" Dia. Wheel
CK - 3" Dia. Wheel

OWNERS INSTRUCTIONS



NOTE: Make sure to place Nylon Washer (AD) between the Leg Press Footrest (16) and Carriage (6) when assembling. Nylon Washer is placed in this area to reduce friction.

NOTE: Wheel assemblies are only shown once for clarity. Repeat assembly where applicable.

OWNERS

INSTRUCTIONS

Step 2d

FRAME ASSEMBLY

Start this assembly by sliding (6) into (4) and (5). Then attach (3) to both (4), (5) and (2). Wrench Tighten these bolts and the bolts that were Snug Tightened in Step 2a.

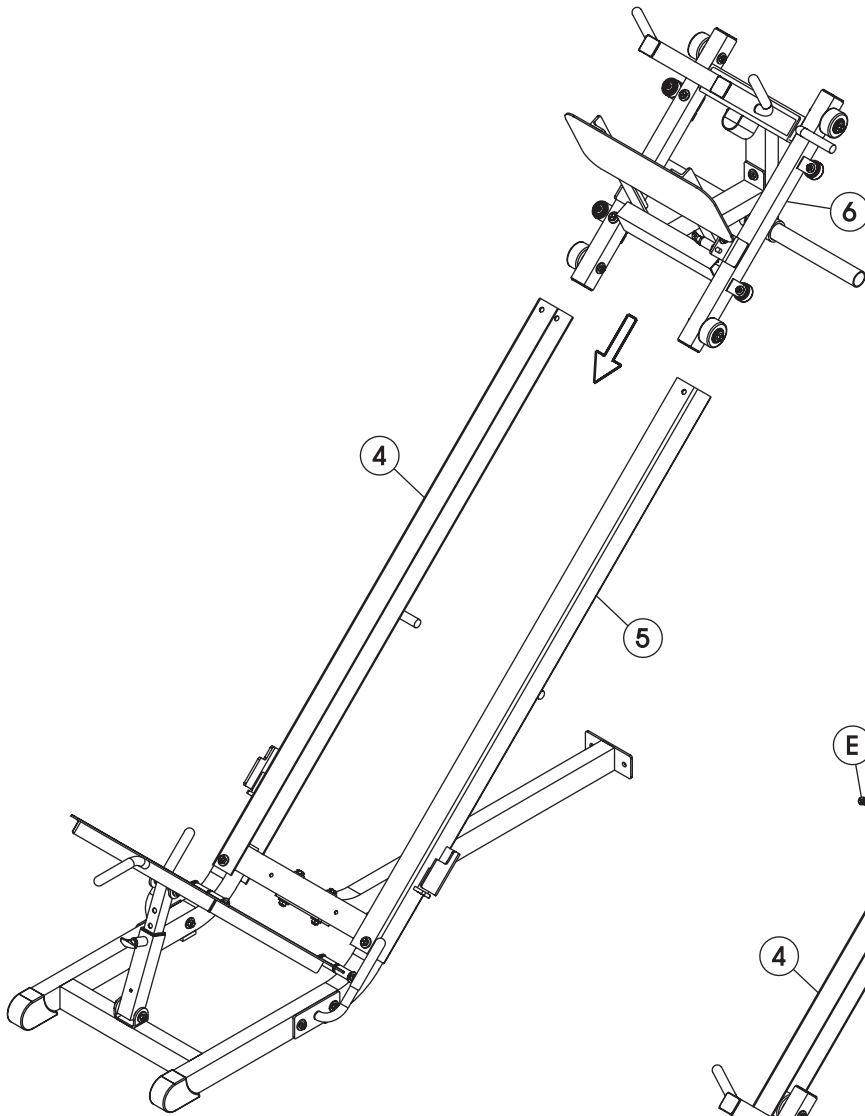
Part Descriptions

- 2 - Base Runner
- 3 - Rear Upright
- 4 - Left Rail
- 5 - Right Rail
- 6 - Carriage

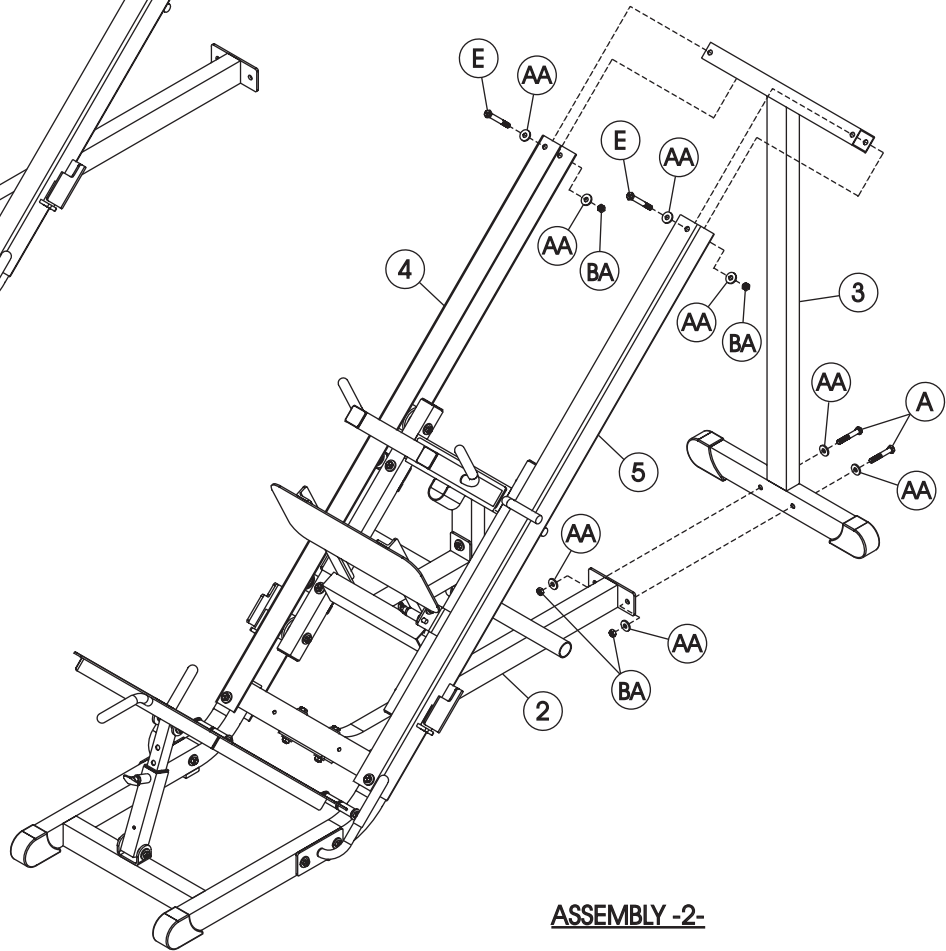
Hardware Descriptions

- A - 1/2"-13 x 3" Hex Head Screw
- E - 1/2"-13 x 4 1/4" Hex Head Screw
- AA - 1/2" Flat Washer
- BA - 1/2" Nylok Nut

OWNERS INSTRUCTIONS



ASSEMBLY -1-



ASSEMBLY -2-

OWNERS

INSTRUCTIONS

Step 2e

FRAME ASSEMBLY

Now start this assembly by sliding each (12) into the holders on the sides of (4) and (5), (*See Detail -C-*). Then finish by sliding (13) onto the ends of both (12)'s, (*See Detail -D-*). Then attach (13) to the top of (3). Wrench Tighten bolts. Now adjust the side to side movement of the Carriage. To do this slide the Carriage as far towards the Right Rail as possible. Adjust the Wheel Mounts (11) out until the Wheels (CJ) contact the inside of the Left Rail. Wrench Tighten bolts. (*See Detail -E-*), Which is a reverse Carriage view for clarity.

Part Descriptions

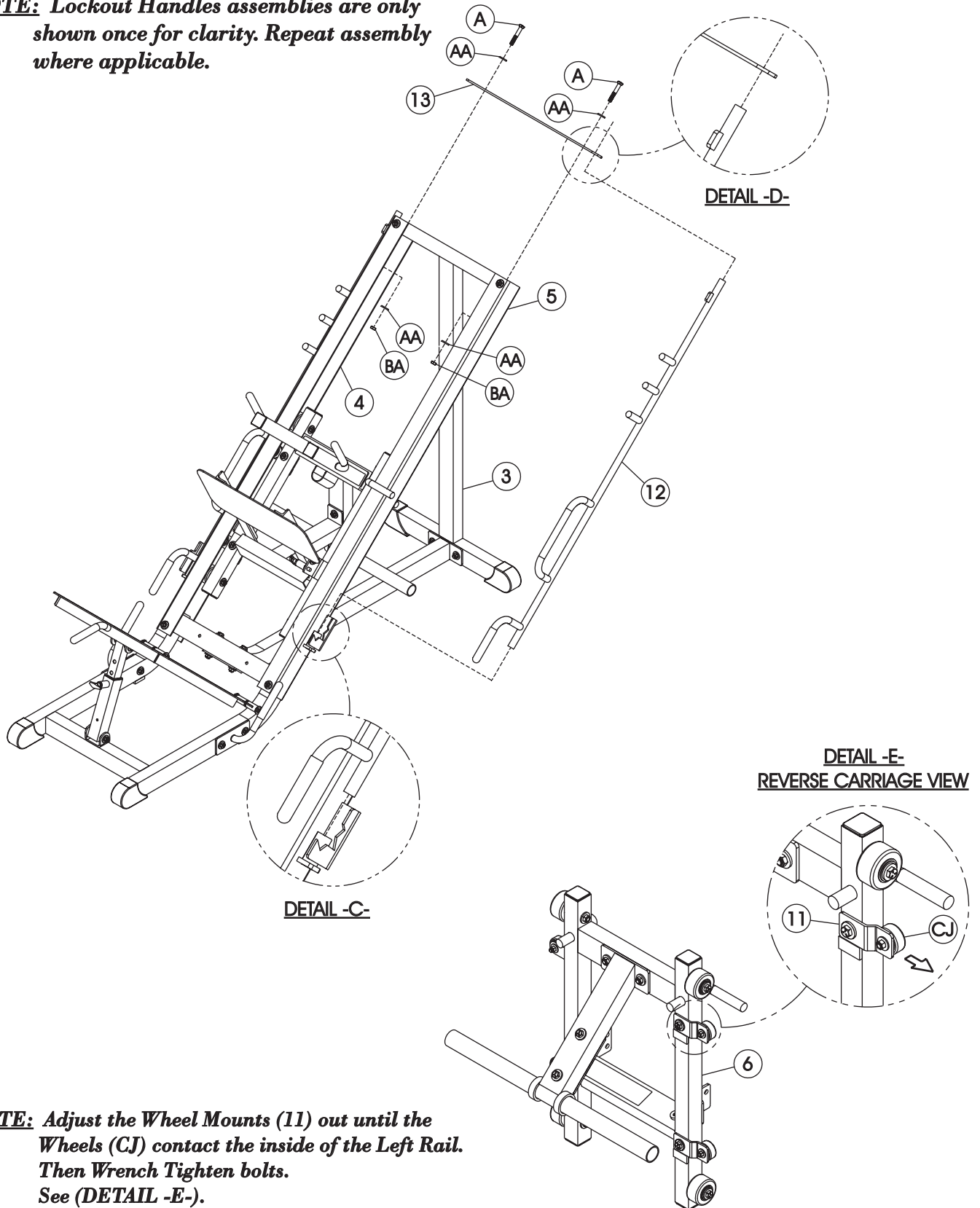
3 - Rear Upright
4 - Left Rail
5 - Right Rail
6 - Carriage
11 - Wheel Mount
12 - Lockout Handles
13 - Lockout Top Mount

Hardware Descriptions

A - 1/2"-13 x 3" Hex Head Screw
AA - 1/2" Flat Washer
BA - 1/2" Nylok Nut

OWNERS INSTRUCTIONS

NOTE: Lockout Handles assemblies are only shown once for clarity. Repeat assembly where applicable.



NOTE: Adjust the Wheel Mounts (11) out until the Wheels (CJ) contact the inside of the Left Rail. Then Wrench Tighten bolts. See (DETAIL -E-).

OWNERS

INSTRUCTIONS

Step 2f

FRAME ASSEMBLY

Start by attaching (CM) to (1). Then you will attach both (CN)'s to (7). Now you will finish the assembly by attaching (17) to (CL). See note with assembly view on following page. *Wrench Tighten bolts.*

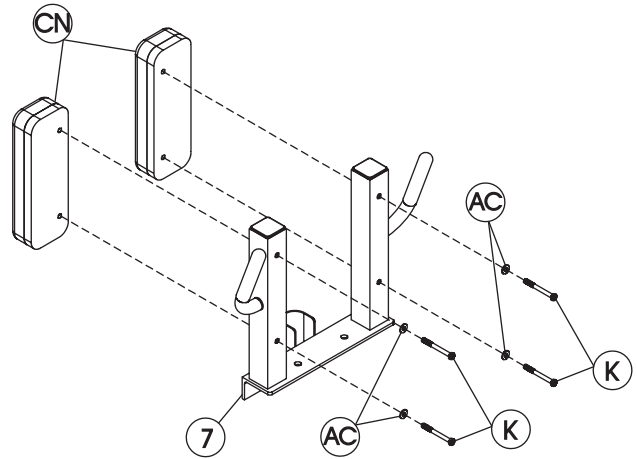
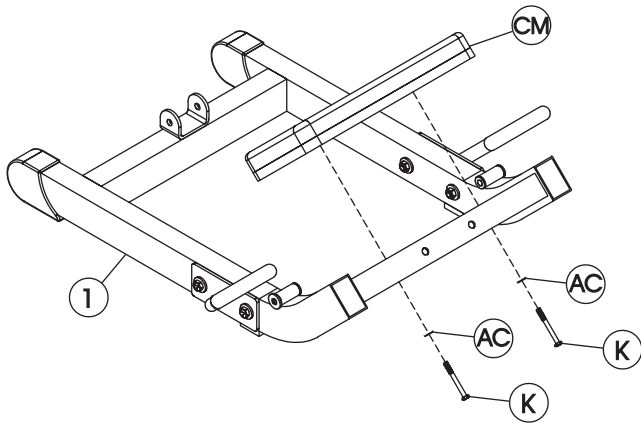
Part Descriptions

- 1 - Base Front
- 7 - Shoulder Pad Mount
- 17 - Back Pad Anchor

Hardware Descriptions

- K - 5/16"-18 x 3" Hex Head Screw
- L - 5/16"-18 x 1 1/2" Hex Head Screw
- AC - 5/16" Flat Washer
- CL - 12" x 35" Upholstery Pad
- CM - 9" x 18" Upholstery Pad
- CN - 4" x 12" Upholstery Pad

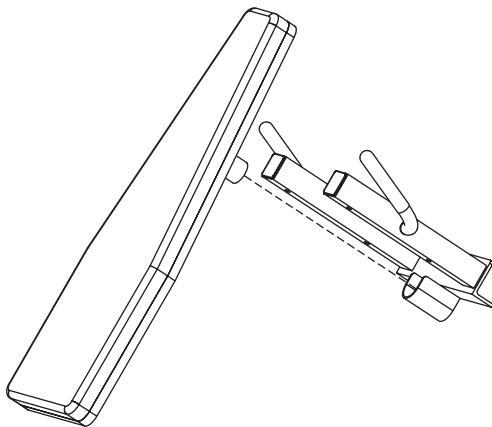
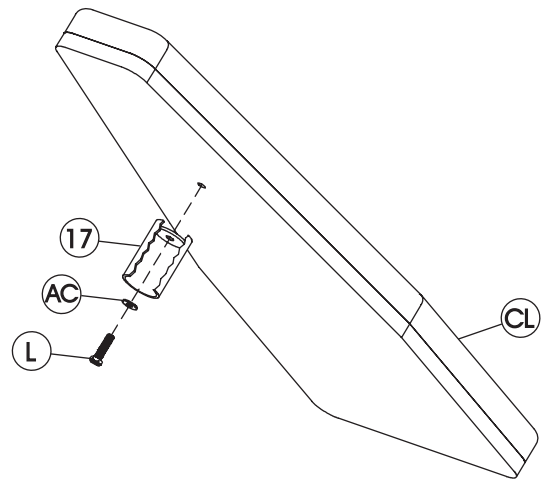
OWNERS INSTRUCTIONS



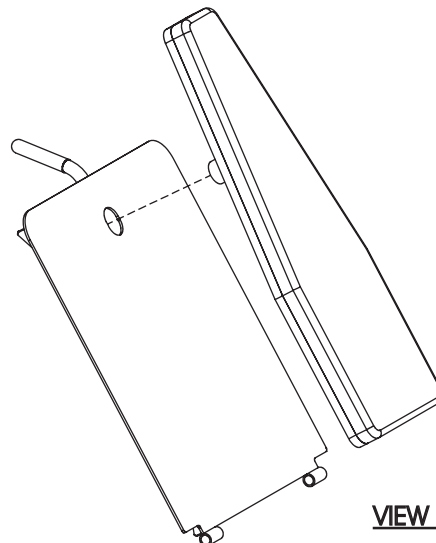
ROTATED FOR CLARITY

NOTE: Before attaching the Back Pad Anchor to the 12" x 35" Upholstery Pad. You need to make sure that the plate inside the Anchor is the side closest to the Upholstery Pad before bolting.

NOTE: Position 12" x 35" Pad as shown in (VIEW -1-) for Hack Exercises, and as shown in (VIEW -2-) for Leg Press Exercises.



VIEW -1-



VIEW -2-

OWNERS

INSTRUCTIONS

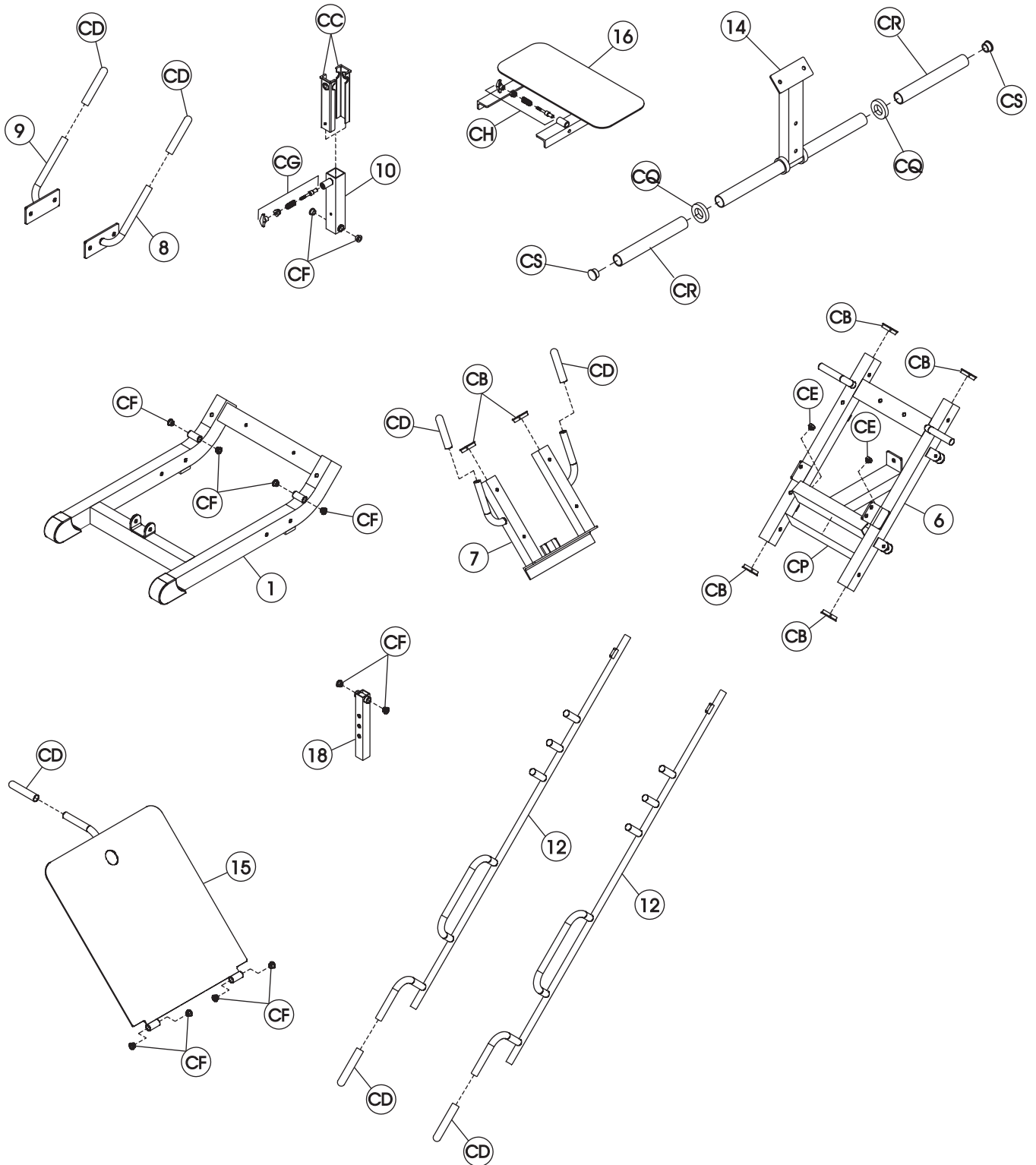
PRE ASSEMBLED PARTS

Part Descriptions

- CB - 2" x 2" End Cap
- CC - Easy Glide Sleeve
- CD - 6" Foam Grip
- CE - Plug Bumper
- CF - 1/2" Oilite
- CG - Short Pull Pin
- CH - Long Pull Pin
- CP - 4" x 12" Non-Skid
- CQ - Rubber Donut
- CR - Weight Horn Sleeve
- CS - 1 5/8 Dia. End Cap

OWNERS INSTRUCTIONS

PRE ASSEMBLED PARTS



OWNERS
I N S T R U C T I O N S

OWNERS

INSTRUCTIONS

PART LISTING

<u>Key #</u>	<u>Qty.</u>	<u>Part Number</u>	<u>Description</u>
1	1	26-STD-HF357-01	Base Front
2	1	26-STD-HF357-02	Base Runner
3	1	26-STD-HF357-03	Rear Upright
4	1	26-STD-HF357-04	Left Rail
5	1	26-STD-HF357-05	Right Rail
6	1	26-STD-HF357-06	Carriage
7	1	26-STD-HF357-07	Shoulder Pad Mount
8	1	26-STD-HF357-08	Right Handle
9	1	26-STD-HF357-09	Left Handle
10	1	26-STD-HF357-10	Outer Footrest Adjuster
11	2	26-STD-HF357-11	Wheel Mount
12	2	26-STD-HF357-12	Lockout Handles
13	1	26-STD-HF357-13	Lockout top Mount
14	1	26-STD-HF357-14	Weight Carrier
15	1	26-STD-HF357-15	Hack Footrest
16	1	26-STD-HF357-16	Leg Press Footrest
17	1	26-STD-HF357-17	Back Pad Anchor
18	1	26-STD-HF357-18	Inner Footrest Adjuster

OWNERS

I N S T R U C T I O N S

H A R D W A R E L I S T I N G

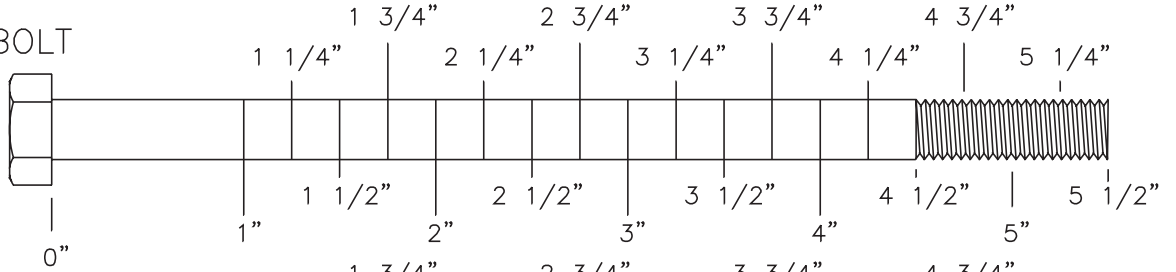
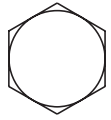
<u>Key #</u>	<u>Qty.</u>	<u>Part Number</u>	<u>Description</u>
A	12	011-0207012	1/2"-13 x 3" Hex Head Screw
B	4	011-0007013	1/2"-13 x 4" Hex Head Screw
C	2	011-0207011	1/2"-13 x 3 1/4" Hex Head Screw
D	2	011-0007002	1/2"-13 x 1 1/2" Hex Head Screw
E	4	011-0007015	1/2"-13 x 4 1/4" Hex Head Screw
F	4	011-0207026	1/2"-13 x 4 1/2" Hex Head Screw
G	2	011-0007017	1/2"-13 x 5 1/2" Hex Head Screw
H	2	011-0207007	3/8"-16 x 2" Hex Head Screw
J	2	011-0207006	3/8"-16 x 1 3/4" Hex Head Screw
K	6	011-0007075	5/16"-18 x 3" Hex Head Screw
L	1	011-0007093	5/16"-18 x 1 1/2" Hex Head Screw
AA	64	013-0302011	1/2" Flat Washer
AB	8	013-0202004	3/8" Flat Washer
AC	7	013-0202003	5/16" Flat Washer
AD	2	013-0102006	1/2" Nylon Washer
BA	26	012-0004001	1/2" Nylok Nut
BB	4	012-0304004	3/8" Nylok Nut
BC	4	012-0304001	1/2" Nylok Nut (Thin)
CB	6	16-CAP-22	2" x 2" End Cap
CC	2	026-01PL125	Easy Glide Sleeve
CD	7	019-0002015	6" Foam Grip
CE	2	19-PAD-1	Plug Bumper
CF	12	26-STD-08-0026	1/2" Oilite
CG	1	26-STD-11-0018	Short Pull Pin
CH	1	26-STD-11-0040	Long Pull Pin
CJ	4	020-0014022	2" Dia. Wheel
CK	4	020-0014023	3" Dia. Wheel
CL	1	022-01PD0027	12" x 35" Upholstery Pad
CM	1	022-01PD0028	9" x 18" Upholstery Pad
CN	1	022-01PD0029	4" x 12" Upholstery Pad
CP	1	021-0005007	4" x 12" Non-Skid
CQ	2	26-STD-06-0200	Rubber Donut
CR	2	26-STD-06-0201	Weight Horn Sleeve
CS	2	026-01PL183	1 5/8" Dia. End Cap

OWNERS

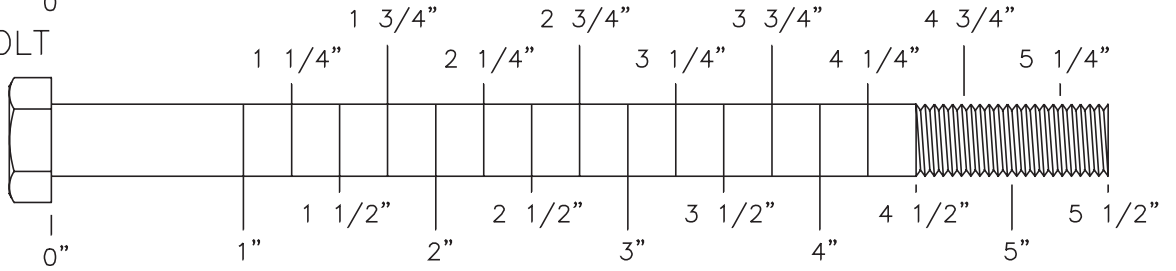
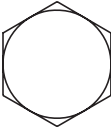
INSTRUCTIONS

BOLT SIZING CHART

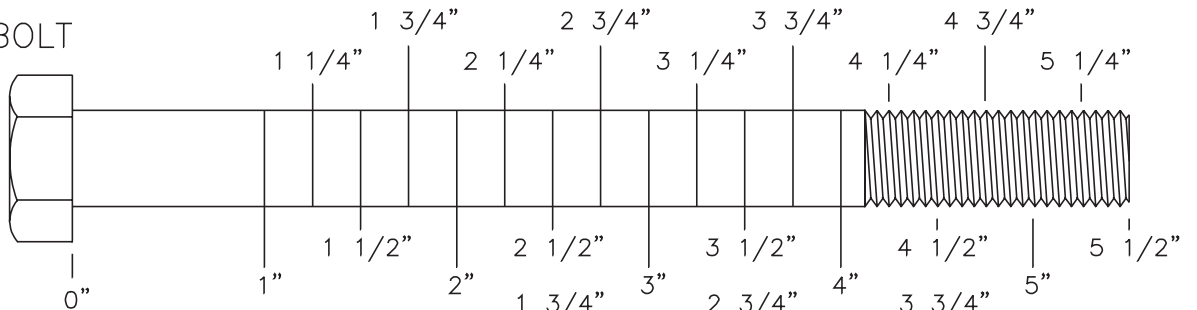
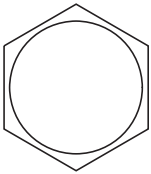
5/16" HEX BOLT



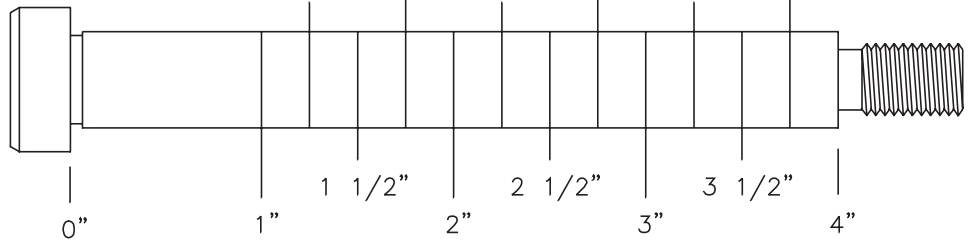
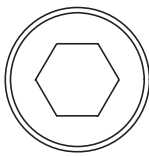
3/8" HEX BOLT



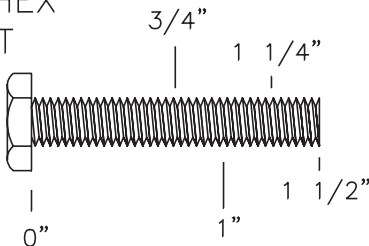
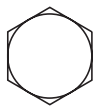
1/2" HEX BOLT



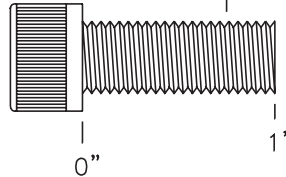
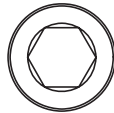
1/2" SHOULDER BOLT



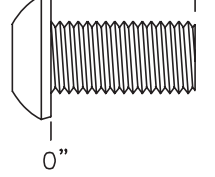
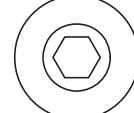
1/4" HEX BOLT



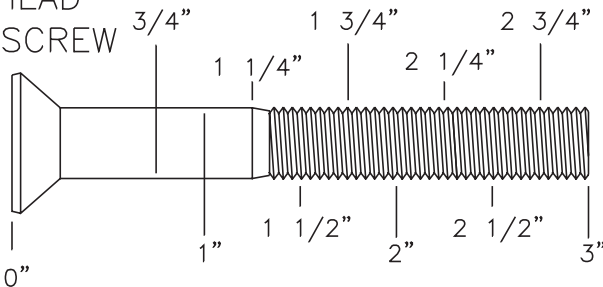
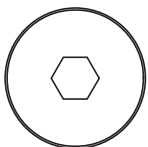
3/8" SOCKET CAP SCREW



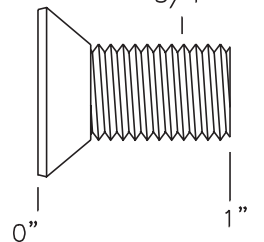
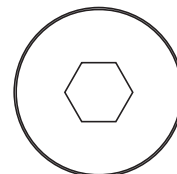
3/8" BUTTON HEAD CAP SCREW



3/8" FLATHEAD SOCKET CAP SCREW



1/2" FLATHEAD SOCKET CAP SCREW

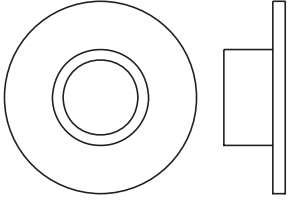


OWNERS

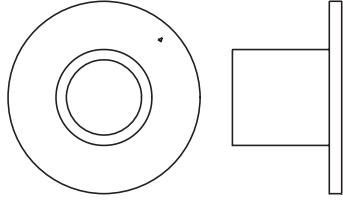
INSTRUCTIONS

WASHER SIZING CHART

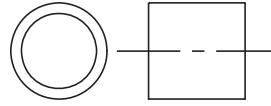
1/4" LONG FLANGED PULLEY SPACER



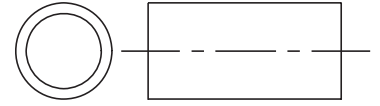
1/2" LONG FLANGED PULLEY SPACER



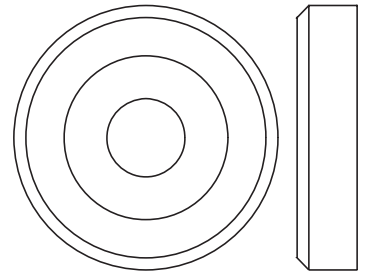
1/2" LONG PULLEY SPACER



1" LONG PULLEY SPACER



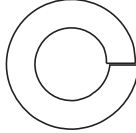
1 3/8" ALUMINUM FLATHEAD CAP



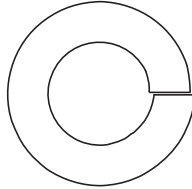
1/4" LOCK WASHER



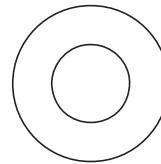
3/8" LOCK WASHER



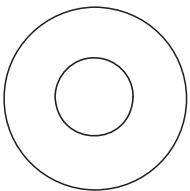
1/2" LOCK WASHER



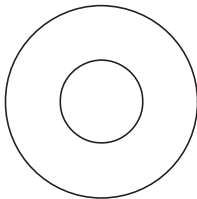
5/16" FLAT WASHER



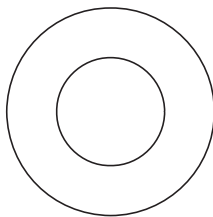
5/16" FLAT WASHER
LARGE, USS, 25mm



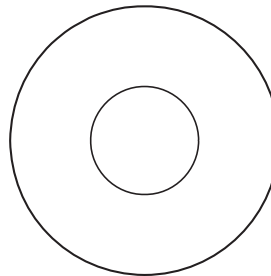
3/8" FLAT WASHER



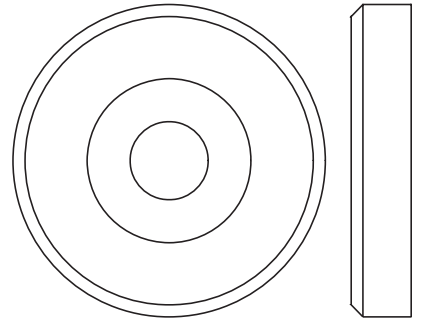
1/2" FLAT WASHER
SMALL, SAE, 26mm



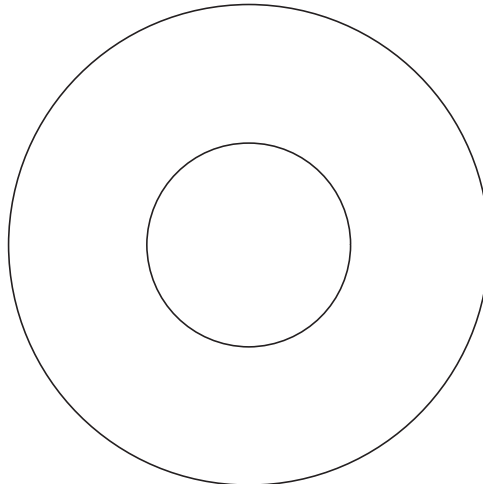
1/2" FLAT WASHER
LARGE, USS, 34mm



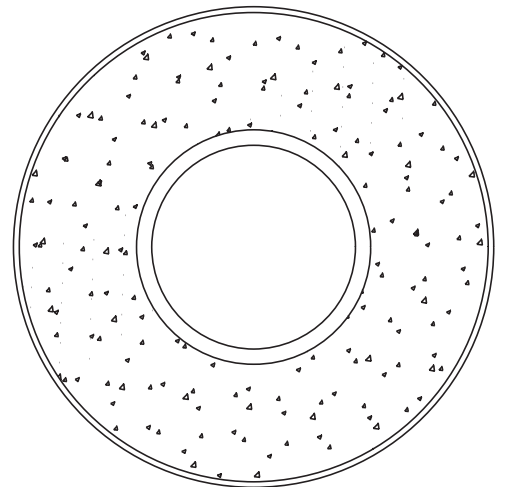
1 5/8" ALUMINUM FLATHEAD CAP



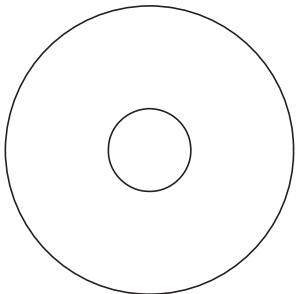
1 1/16" FENDER WASHER



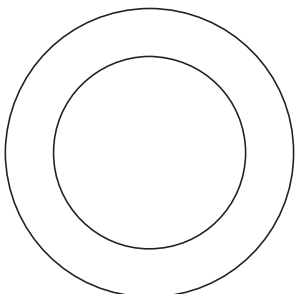
PLASTIC 1 1/16" FENDER WASHER



3/8" FENDER WASHER



1" SHIM WASHER



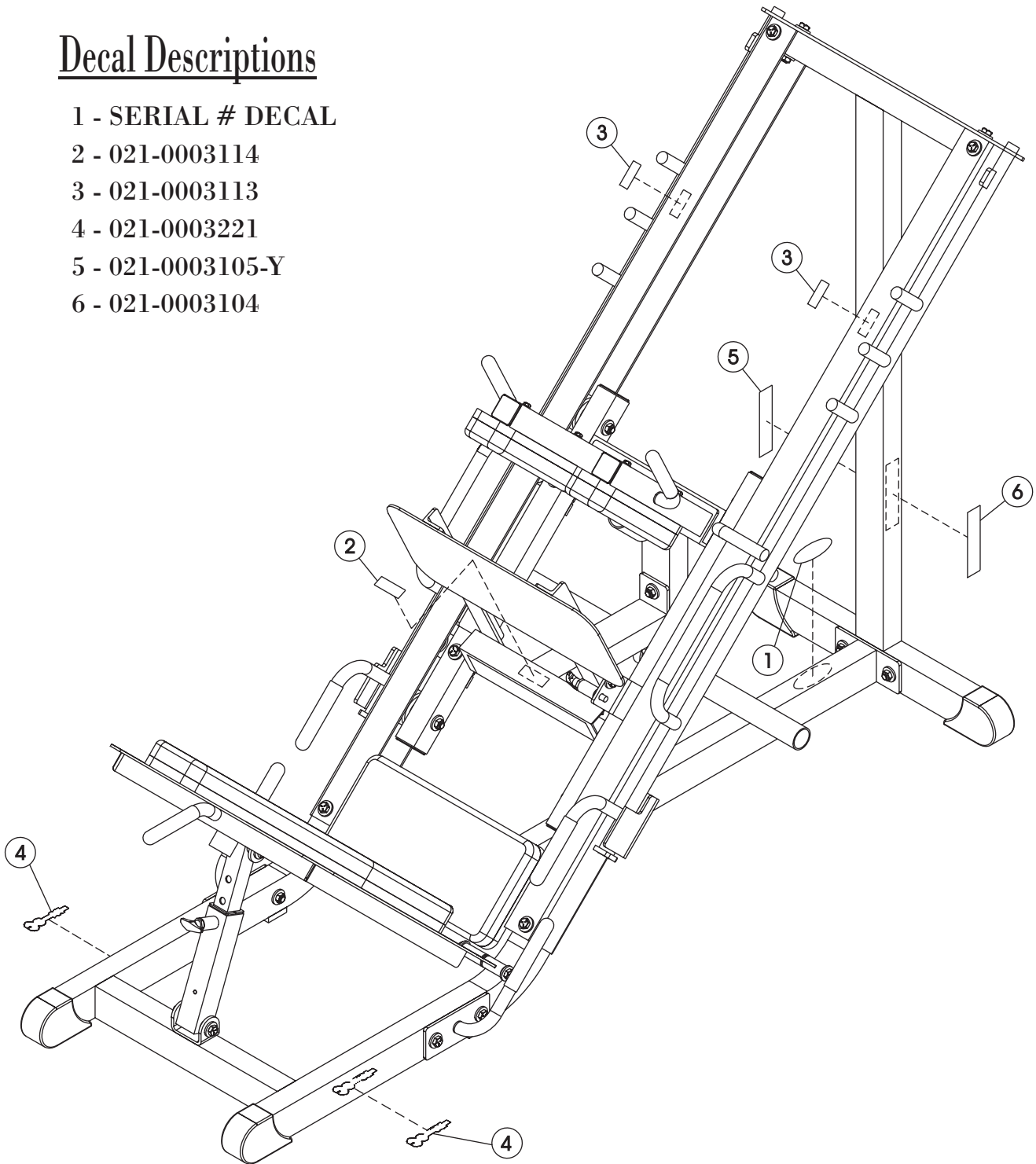
OWNERS INSTRUCTIONS

OWNERS INSTRUCTIONS

DECAL PLACEMENTS

Decal Descriptions

- 1 - SERIAL # DECAL
- 2 - 021-0003114
- 3 - 021-0003113
- 4 - 021-0003221
- 5 - 021-0003105-Y
- 6 - 021-0003104



OWNERS INSTRUCTIONS

DECAL REFERENCE

SERIAL # DECAL; Always refer to the number Shown on your piece of equipment when talking to customer service or ordering parts.



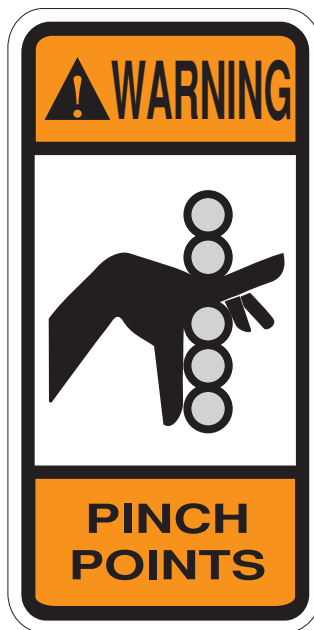
SERIAL # DECAL

This decal has been attached to this piece of equipment to provide information regarding operation, safety and maintenance. Before use, take the time to read these decals.



021-0003114

DECAL REFERENCE

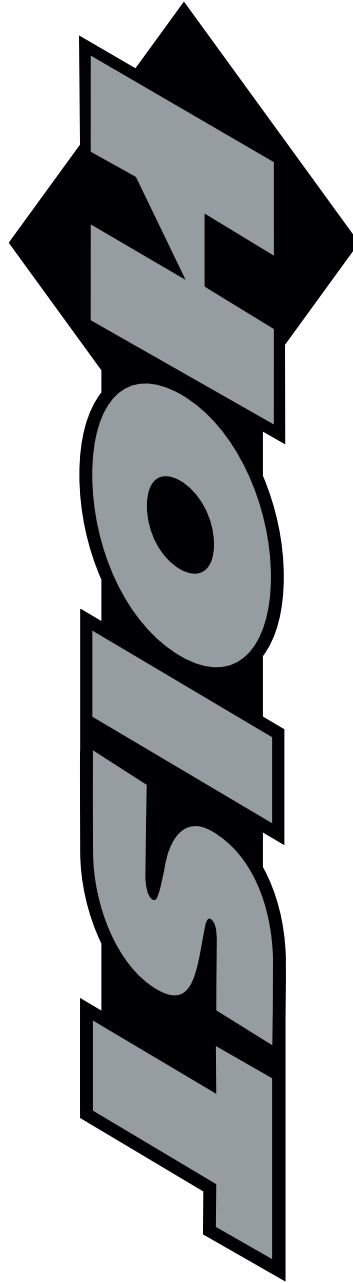


021-0003113

This decal has been attached to this piece of equipment to provide information regarding operation, safety and maintenance. Before use, take the time to read these decals.

OWNERS
I N S T R U C T I O N S

DECAL REFERENCE



021-0003221

OWNERS INSTRUCTIONS

DECAL REFERENCE

This decal has been attached to this piece of equipment to provide information regarding operation, safety and maintenance. Before use, take the time to read these decals.

!

WARNING

USE ONLY GENUINE HOIST REPLACEMENT PARTS. FAILURE TO DO SO WILL VOID WARRANTY AND COULD RESULT IN PERSONAL INJURY OR EVEN DEATH. THERE IS A RISK ASSUMED BY INDIVIDUALS WHO USE THIS TYPE OF EQUIPMENT. TO MINIMIZE THE RISK ALWAYS FOLLOW THESE SIMPLE RULES.

1. READ & UNDERSTAND ALL ENCLOSED INSTRUCTIONS before using this equipment.
2. INSPECT EQUIPMENT BEFORE EACH USE. Replace all parts at the first signs of wear or damage. If in doubt about a certain part, DO NOT use the equipment until the part is replaced. Failure to replace worn or damaged parts may result in injury.
3. FOLLOW ROUTINE MAINTENANCE SCHEDULE
4. CONSULT YOUR PHYSICIAN BEFORE STARTING ANY EXERCISE PROGRAM. Warm up properly before engaging in weight resistance training. Stop exercising if you feel faint or dizzy.
5. TO PREVENT THE POSSIBILITY OF SERIOUS INJURY, KEEP CLEAR OF ALL MOVING PARTS. Do not attempt to free any jammed part by yourself. Obtain assistance in order to avoid possible injury.
6. Take your time and do not rush the exercise. Practice proper breathing, NEVER hold your breath.
7. CHILDREN SHOULD NOT BE ALLOWED TO USE THIS EQUIPMENT. To avoid possible injury, children should be kept at a safe distance when this equipment is in use. Teenagers should not use this equipment without adult supervision.
8. CALL YOUR AUTHORIZED HOIST DISTRIBUTOR if you have any questions on the proper use or maintenance of this equipment.

021-0003105-Y

NOTICE					
	Daily	Weekly	Monthly	Months	Yearly
COMMERCIAL MAINTENANCE					
Inspect: Links, Pull Pins, Snap Locks, Swivels, Weight Stack Pins	x				
Clean: Upholstery	x				
Inspect: Cables or Belts and their tension	x				
Inspect: Accessory Bars and Handles		x			
Inspect: All Decals		x			
Inspect: All nuts and Bolts Tighten if Needed.		x			
Inspect: Anti-Skid Surfaces		x			
Clean & Lubricate: Guide Rods with a Teflon (PTFE) based lubricant (Superlube)			x		
Lubricate: Seat Sleeves, Turcite Bushings, Linear Bearing			x		
Clean & Wax: All Glossy Finishes				x	
Repack with Grease Linear Bearings				x	
Replace: Cables, Belts and Connecting Parts.					x

021-0003104

OWNERS
I N S T R U C T I O N S

OWNERS

I N S T R U C T I O N S

W E I G H T T R A I N I N G T I P S

Always consult your physician before starting any exercise program.

Hoist equipment is designed to maximize your time spent working out. Having an exercise routine planned out in advance will allow you to get the most benefit out of the time spent exercising, and will also enable you to work all the major muscle groups.

Warm up properly before engaging in weight resistance training. Stretching, yoga, jogging, calisthenics or other cardiovascular exercise can help prepare your body for the heavier workload of lifting weights.

Learn how to perform the exercise correctly before using heavy weight. Correct form is important to avoid injury and to ensure that you work the proper muscle groups.

Know your limitations. If you are new to weight training or are embarking on an exercise regimen after a long layoff, start slowly and build foundational strength over a longer period of time.

Pay attention to your breathing. Exhale when you exert is a general rule of thumb. Never hold your breath.

OWNERS
I N S T R U C T I O N S

OWNERS INSTRUCTIONS

HOIST FITNESS SYSTEMS GENERAL MAINTENANCE INFORMATION

Links, Pull-Pins, Snap Locks, Swivels, Weight Stack Pins:

- * *Check all pieces for signs of visible wear or damage.*
- * *Check springs in snap hooks and pull-pins for proper tension and alignment.*
- * *If the spring sticks or has lost its rigidity, replace it immediately.*

Upholstery:

- * *To ensure prolonged upholstery life and proper hygiene, all upholstered pads should be wiped down with a damp cloth after every workout.*
- * *Periodically take the time to use a mild soap or an approved vinyl upholstery cleaner to deter the onset of cracking or drying. Avoid using any abrasive cleaners or cleaners not intended for use on vinyl.*
- * *Replace ripped or worn upholstery immediately.*
- * *Keep sharp or pointed objects clear of all upholstery.*

Guide Rods:

- * *Wipe clean with a dust free rag. Lubricate once a week with a Silicon or Teflon based lubricant.*

Decals:

- * *Inspect and familiarize yourself with any safety warnings or other user information posted on each decal.*

Nuts and Bolts:

- * *Inspect all nuts and bolts for any loosening and tighten if needed.*
- * *Go through a re-tightening sequence periodically to ensure that all hardware is tensioned properly.*

Anti-Skid Surfaces:

- * *These surfaces are designed to supply secure footing and need to be replaced if they appear worn or become slippery.*

Cables:

- * *Hoist uses only Aircraft Quality Cable which meets or exceeds military specifications. Although our cables are designed to last for years, to ensure optimum performance and as a routine safety precaution we recommend that all cables be replaced yearly.*
- * *Visually inspect the cable for fraying, cracking, peeling or discoloration.*
- * *While the machine is not in use, carefully run your fingers along the cable to feel for thinning or bulging areas.*
- * *Replace cables immediately at the first signs of damage or wear. Do not use equipment until cables have been replaced.*

OWNERS I N S T R U C T I O N S

Continued: GENERAL MAINTENANCE INFORMATION

Cable Tension:

- * *Referring to the Assembly/Owners Manual, check all cable bolts and attachments to be sure they are properly attached.*
- * *Check slack in cables and readjust cable tension if needed.*

Seat Sleeves, Turcite Bushings:

- * *Wipe down adjusting tubes with a dust free rag before applying lubricant.*
- * *Lubricate seat sleeves and turcite bushings with a Silicon or Teflon based lubricant spray.*

Linear Bearings:

- * *Referring to the Assembly/ Owners manual carefully dis-assemble the bearing from its housing and place a finger full of light grease (lithium, super lube, etc.) into the inside of the bearing. Using your finger, press the grease into the ball-bearings and their tracks. Repeat until the ball-bearing tracks are full of grease. Insert the shaft back into the bearing and wipe off excess grease.*

PLEASE KEEP THIS FOR YOUR RECORDS.

OWNERS

I N S T R U C T I O N S

MAINTENANCE SCHEDULE

<i>ROUTINE</i>	<i>COMMERCIAL MAINTENANCE</i>	<i>HOME MAINTENANCE</i>	<i>LATEST DATE ENTRY</i>							
Inspect; Links, Pull Pins, Snap Locks, Swivels, Weight Stack Pins	DAILY	WEEKLY								
Clean; Upholstery	DAILY	WEEKLY								
Inspect; Cables or Belts and their tension	DAILY	WEEKLY								
Inspect; Accessory Bars and Handles	WEEKLY	3 MONTHS								
Inspect; All Decals	WEEKLY	3 MONTHS								
Inspect; All Nuts and Bolts, Tighten if Needed	WEEKLY	3 MONTHS								
Inspect; Anti-Skid Surfaces	WEEKLY	3 MONTHS								
Clean & Lubricate; Guide Rods with a Teflon (PTFE) based lubricant (Superlube)	MONTHLY	3 MONTHS								
Lubricate; Seat Sleeves, Turcite Bushings, Linear Bearing	MONTHLY	3 MONTHS								
Clean and Wax; All Glossy Finishes	6 MONTHS	YEARLY								
Repack with Grease; Linear Bearings	6 MONTHS	YEARLY								
Replace; Cables, Belts and Connecting Parts	YEARLY	3 YEARS								

*Your equipment comes with a commercial maintenance decal.
For personal, in home use, please follow the home maintenance schedule listed above.*

OWNERS INSTRUCTIONS

HOIST FITNESS SYSTEMS **LIMITED LIFETIME WARRANTY**

Hoist Fitness Systems warrants this product to the **original purchaser** to be free from defects in workmanship and/or materials under normal use or service. If at any time a component part is defective, Hoist Fitness Systems shall repair or replace it (at Hoist Fitness Systems option) within a reasonable period of time. This warranty does not cover costs of removal, transportation or reinstallation. This warranty shall not apply if the defect was caused by misuse, neglect or normal wear and tear.

WARRANTY CLAIMS. All claims require: Model number, Serial number, Date of installation, and any information supporting the existence of the alleged defect.

To complete Warranty Registration visit:
www.HOISTFITNESS.com
and click on the Warranty Registration link

Starting from the original date of purchase, normal wear and tear shall be considered as the following:

COMMERCIAL USE: All malfunctions of upholstery, grips, paint, and chrome that occur after one year; all malfunctions of electronic components, belts, or cables after one year; all malfunctions of pulleys, bearings, or bushings that occur after five years. The frame and all welded components are warranted for the life of the product.

HOME USE: All malfunctions of grips, paint, and chrome that occur after ten years; all malfunctions of electronic components, belts, cables, or upholstery that occur after ten years; all malfunctions of pulleys, bearings, or bushings that occur after ten years. The frame and all welded components are warranted for the life of the product.

PLEASE NOTE THAT NOT ALL HOIST PRODUCTS ARE MADE FOR COMMERCIAL USE.

Refer to the instructions page of your owners manual or consult with you fitness product dealer to establish if a product is made for commercial use or not. Using a non-commercial product in a commercial setting can result in serious injury or death!

Hoist Fitness Systems sole responsibility shall be to repair or replace the component within the terms stated above. Hoist Fitness Systems shall not be liable for any loss or damage of any kind including any incidental or consequential damages resulting, directly or indirectly from any warranty expressed or implied or any other failure of this product.

WHAT IS NOT COVERED BY THIS WARRANTY

Hoist's sole obligation under this warranty is limited to either repair or replacement of parts, subject to the additions below. This warranty neither assumes nor authorizes any person to assume obligations other than expressly covered by this warranty.

NO CONSEQUENTIAL DAMAGES. Hoist is not responsible for economic loss; profit loss; or special, indirect, or consequential damages.

WARRANTY IS NOT TRANSFERABLE. This warranty is not assignable and applies only in favor of the original purchaser/user to whom delivered. Any such assignment or transfer shall void the warranties herein made and shall void all warranties, expressed, implied or statutory, except the one (1) and five (5) year warranties described above. These warranties are exclusive and in lieu of all other warranties, including implied warranty and merchantability or fitness for a particular purpose. There are no warranties which extend beyond the description on the face hereof.

TRANSPORTATION COSTS. Hoist will accept parts covered under this warranty freight collect, provided that shipment has received prior approval. Hoist is not responsible for any other transportation costs, but will ship freight collect parts either repaired or replaced under these warranties.

Hoist Fitness Systems
9990 Empire St. #130
San Diego, CA. 92126
(800)548-5438

PLEASE KEEP THIS FOR YOUR RECORDS