

StairMaster®



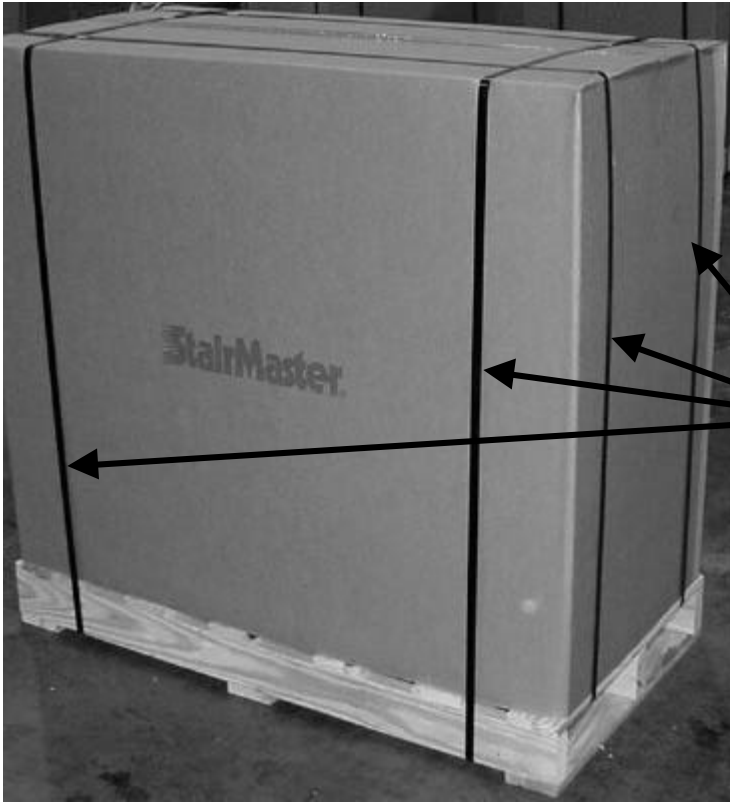
FREE CLIMBER 4400 ASSEMBLY INSTRUCTIONS



TOOLS REQUIRED:

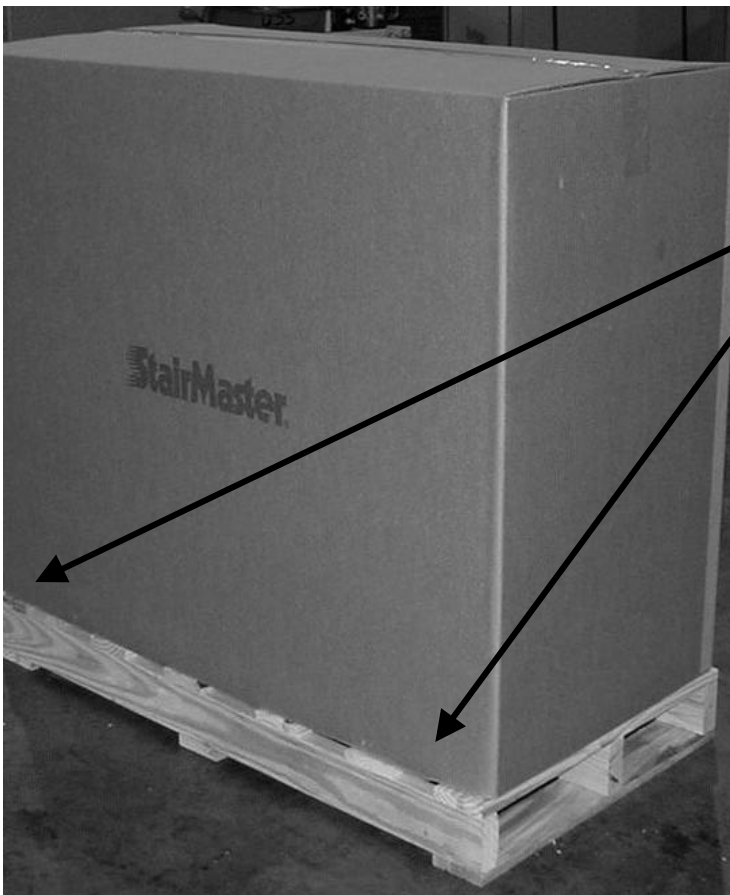
- CLAW HAMMER
- KNIFE
- 1/2" WRENCH OR SOCKET

1. USE KNIFE TO REMOVE ALL PLASTIC STRAPS FROM AROUND PALLET AND CARTON.



STRAP

2. USE CLAW HAMMER TO REMOVE STAPLES HOLDING CARTON TO PALLET.



STAPLE LOCATION

3. REMOVE PLASTIC COVER FROM STEPPER UNIT.

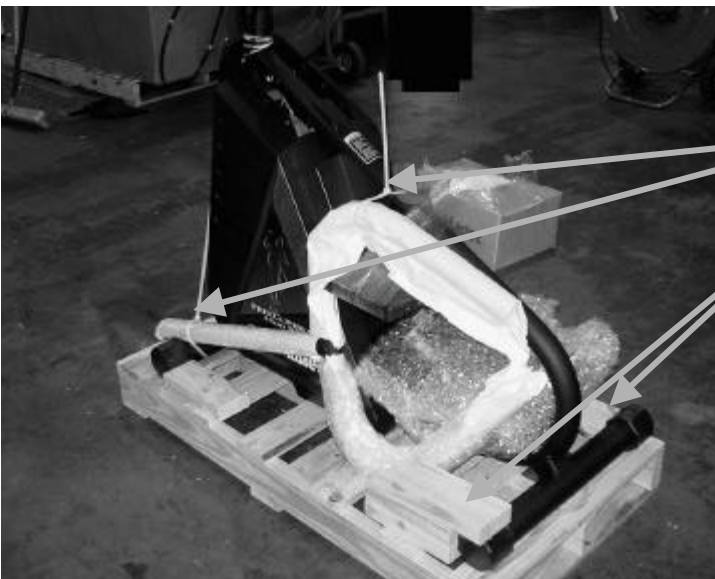
PLASTIC COVER



4. USE CLAW HAMMER TO REMOVE WOODEN BLOCKS FROM PALLET. USE KNIFE TO REMOVE TYRAPS.

TYRAPS

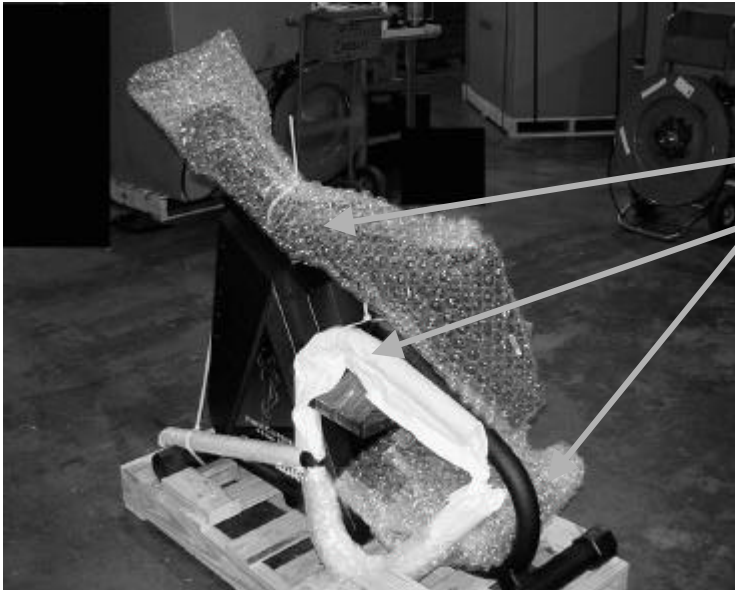
WOOD BLOCKS





ASSEMBLY INSTRUCTIONS

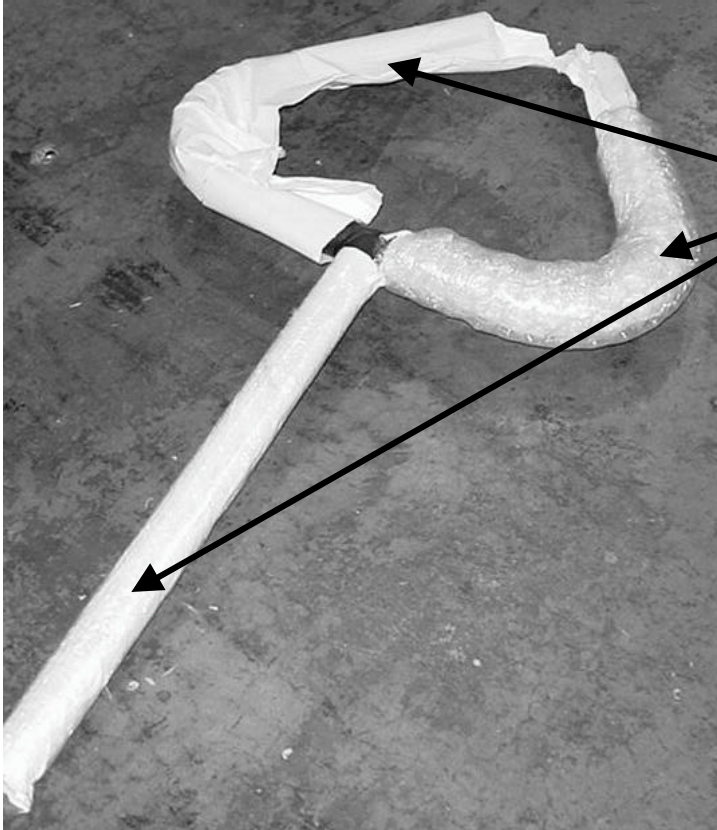
5. REMOVE HANDLE ASSEMBLY AND TWO BUBBLE PACKS FROM PALLET.



BUBBLE PACKS

HANDLE ASSEMBLY

6. REMOVE PROTECTIVE WRAP FROM HANDLE ASSEMBLY AND LAY ASIDE FOR FUTURE INSTALLATION.



PROTECTIVE WRAP



ASSEMBLY INSTRUCTIONS

7. OPEN SMALL BUBBLE PACK, IT CONTAINS THE CONSOLE, MAGAZINE RACK, PLASTIC BAG OF HARDWARE, AND SPACER.



CONSOLE

MAGAZINE RACK

BAG OF HARDWARE

SPACER

8. OPEN LARGE BUBBLE PACK, IT CONTAINS THE LEFT AND RIGHT UPPER COVERS.



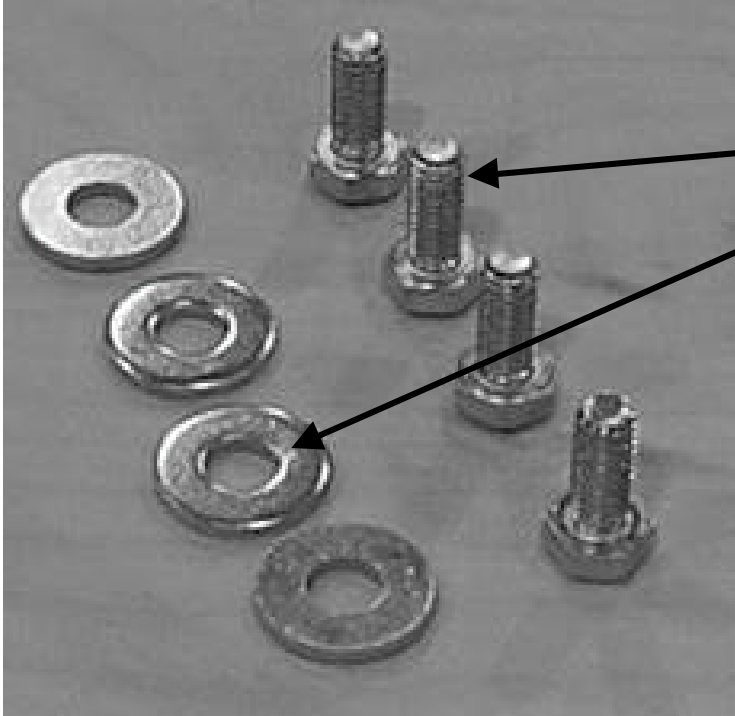
UPPER COVERS

9. OPEN PLASTIC BAG OF HARDWARE AND EMPTY CONTENTS.



PLASTIC BAG

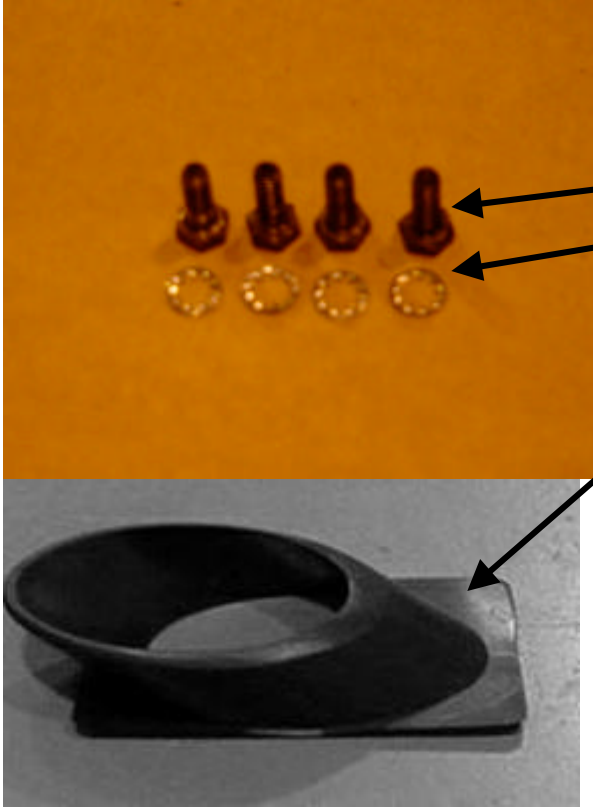
10. THE PLASTIC BAG CONTAINS FOUR BOLTS AND 4 FLAT WASHERS. SLIDE THE FLAT WASHER OVER THE BOLT.



BOLT

FLAT WASHER

11. THE PLASTIC BAG ALSO CONTAINS FOUR SCREWS, FOUR LOCK WASHERS, AND ONE RUBBER GROMMET. SLIDE LOCK WASHER OVER SCREW THREADS. THE PLASTIC RIVETS ARE REQUIRED TO SECURE THE UPPER COVERS.

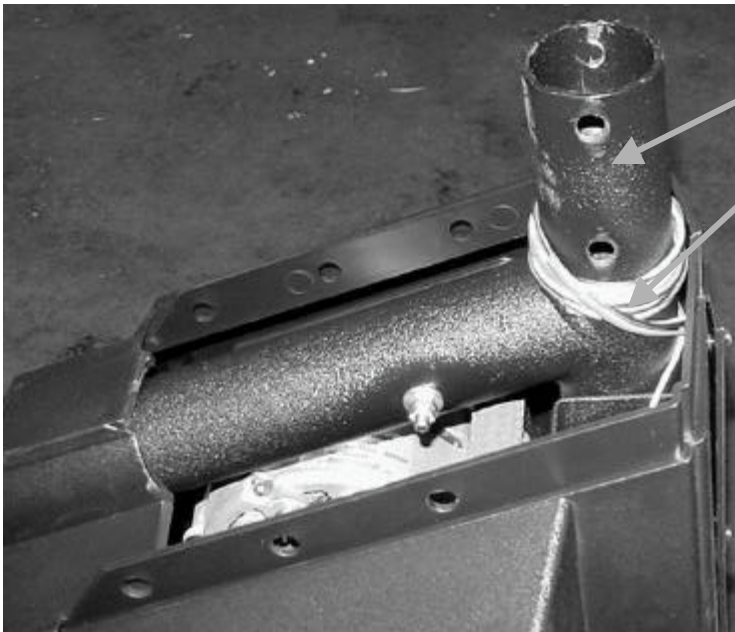


SCREW

LOCK WASHER

GROMMET

12. UNCOIL CABLE FROM AROUND FRAME NECK.



FRAME NECK

CABLE



ASSEMBLY INSTRUCTIONS

13. GET HANDLE ASSEMBLY AND RUBBER GROMMET, SLIDE GROMMET OVER HANDLE. SLIDE HANDLE ASSEMBLY INTO FRAME NECK. ***NOTE ORIENTATION OF RUBBER GROMMET.***



RUBBER GROMMET

NECK FRAME



14. MAKE SURE THAT THE HANDLE IS POSITIONED SO THE UPPER HANDLE PORTION IS PERPENDICULAR TO THE FLOOR



UPPER HANDLE



15. GET THE FOUR BOLTS AND FLAT WASHERS, ALIGN HOLES IN HANDLE ASSEMBLY AND NECK FRAME. INSTALL BOLTS WITH 1/2" WRENCH OR SOCKET. MAKE SURE THE BOLTS ARE TIGHT. THE BOLTS ARE SCREWED INTO A BRACKET INSIDE OF THE BOTTOM OF THE HANDLE ASSEMBLY.

BOLT AND WASHER

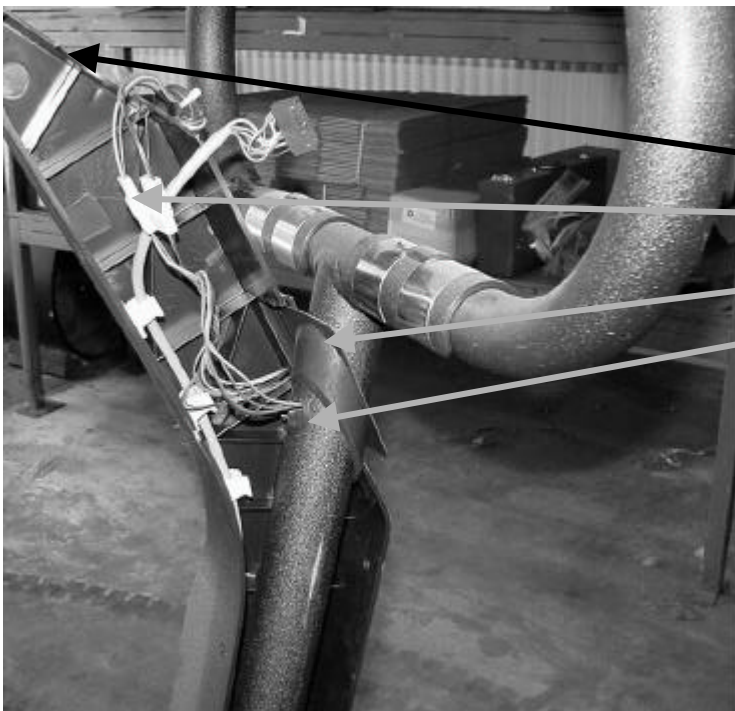


16. GET THE RIGHT HAND UPPER COVER, ROUTE CABLE THROUGH THE WHITE CLIPS, CLOSE CLIPS.

CLIP

CABLE

RIGHT UPPER COVER



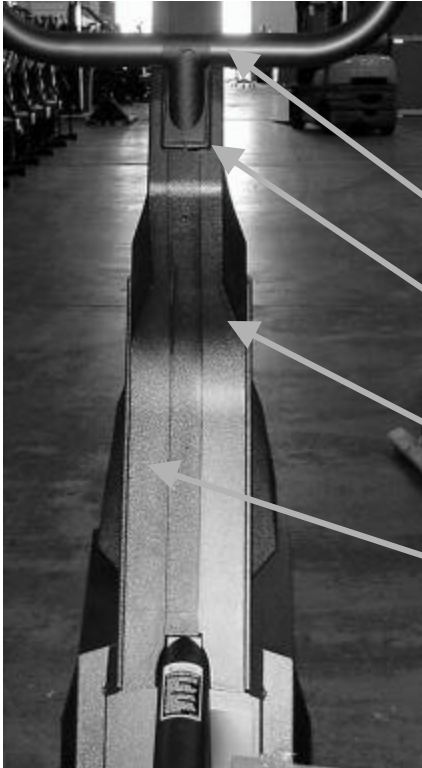
17. FOR STEPPERS WITH CONTACT HEART RATE CABLE, ROUTE CABLE FROM HOLE IN HANDLE TO TOP OPENING IN THE UPPER COVER. WHEN INSTALLING THE LEFT UPPER COVER AVOID PINCHING THE WIRES FROM THE HANDLE.

TOP OPENING

CONTACT HEART RATE CABLE

GROMMET ABOVE OPENING IN HANDLE

OPENING IN HANDLE



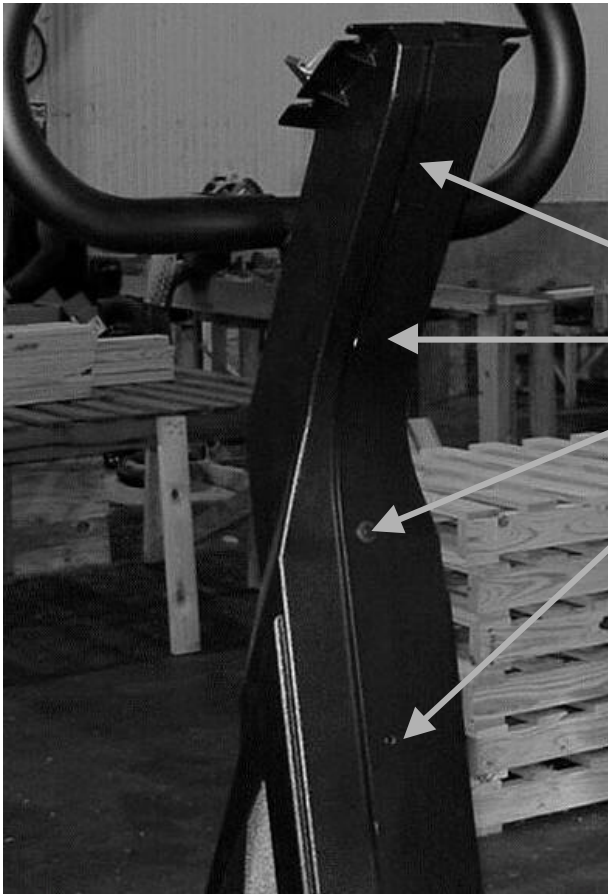
18. GET THE LEFT HAND UPPER COVER, SLIDE RUBBER GROMMET UP TO THE TOP OF THE HANDLE ASSEMBLY. POSITION THE RIGHT HAND UPPER COVER OVER THE LOWER COVER AND HANDLE POST. FIT RUBBER GROMMET INTO THE RIGHT HAND UPPER COVER. POSITION THE LEFT HAND UPPER COVER OVER THE LOWER COVER, HANDLE POST. FIT GROMMET INTO LEFT HAND COVER AND OVERLAP THE RIGHT HAND UPPER COVER. ***NOTE-IF THE COVERS DO NOT FIT THE HANDLE NEEDS TO BE ROTATED 180 DEGREES.***

HANDLE POST

GROMMET

RIGHT HAND UPPER COVER

LEFT HAND UPPER COVER



19. USE EIGHT PUSH RIVETS TO FASTEN THE UPPER COVERS TO EACH OTHER ON BOTH THE FRONT AND REAR OVERLAPPING SEAMS. IF THE RIVETS CAN NOT BE PUSHED INTO THE MATING HOLES USE A MALLETT, OR LIGHTLY TAP WITH A HAMMER.

PUSH RIVETS



20. GET CONSOLE AND MAGAZINE RACK..
POSITION BRACKET IN HOLES AND
GROOVES ON THE BACK OF THE
CONSOLE.

CONSOLE

HOLES IN BACK OF CONSOLE

MAGAZINE RACK

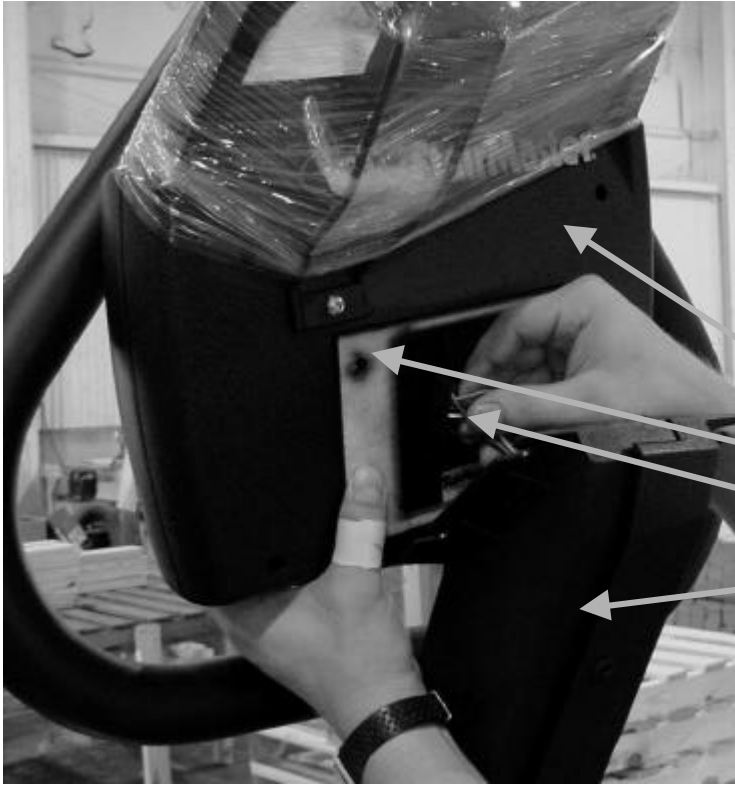


21. GET SPACER AND POSITION OVER
MAGAZINE RACK ON CONSOLE.

CONSOLE

SPACER

MAGAZINE RACK



22. POSITION CONSOLE, SPACER, AND MAGAZINE RACK ON TOP OF THE UPPER COVERS. PLUG IN CONNECTOR FROM CABLE TO CONSOLE. BE SURE TO POSITION THE CONNECTOR CORRECTLY WITH THE ALIGNING TAB ON THE FEMALE CONNECTOR WITH THE ALIGNING SLOT ON THE MALE CONNECTOR. ALIGN HOLES IN SPACER, UPPER COVERS, AND CONSOLE ..

CONSOLE

SPACER

CONNECTOR FROM CABLE

UPPER COVERS

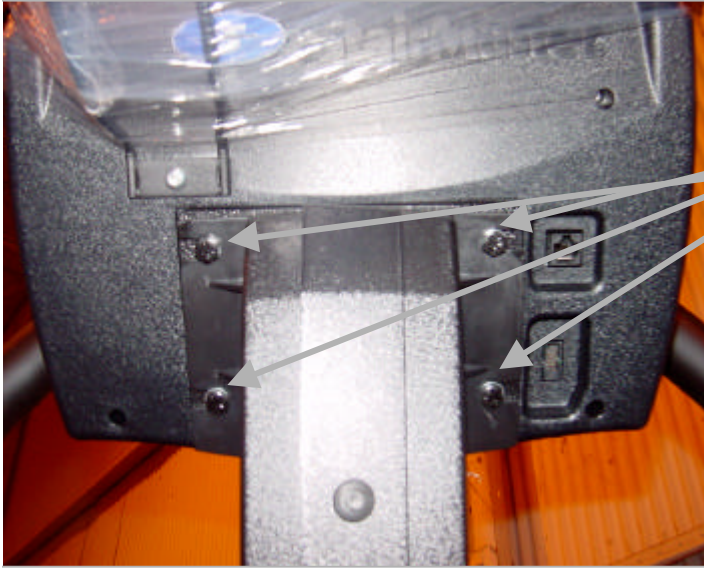


23. FOR STEPPER WITH CONTACT HEART RATE, CONNECT SMALL CONNECTOR TO CONSOLE IMMEDIATELY ABOVE LARGE CONNECTOR. BE SURE TO POSITION THE CONNECTORS CORRECTLY WITH THE ALIGNING TAB ON THE FEMALE CONNECTOR WITH THE ALIGNING SLOT ON THE MALE CONNECTOR.

SMALL CONNECTOR

LARGE CONNECTOR

SPACER



24. USE FOUR SCREWS WITH LOCK WASHERS TO SECURE CONSOLE TO UPPER COVERS.

SCREWS

25. GET KNIFE AND REMOVE STRETCH WRAP FROM CONSOLE AND CARTON ATTACHED TO PEDAL.

CONTENTS OF CARTON FOR 4400PT:

BAG OF SPARE PLASTIC PUSH RIVETS

RIVET REMOVAL TOOL

MANUAL

POWER SUPPLY



CONTENTS OF CARTON FOR 4400CL

BAG OF SPARE PLASTIC PUSH RIVETS

RIVET REMOVAL TOOL

MANUAL

BATTERY CHARGER

CONSOLE

CARTON

SEE OWNER'S MANUAL FOR SETUP AND OPERATING INSTRUCTIONS.